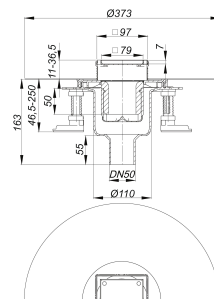
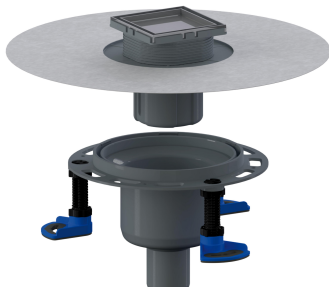


**floor drain DallDrain Individual vertical, DN 50/DN 100, 100 x 100 mm**

Part number: 517203

GTIN: 4001636517203

Rebate group: 6

**Description:**

floor drain DallDrain Individual vertical, DN 50/DN 100, 100 x 100 mm

conforming to DIN EN 1253

Floor drain including grating DallDrain Individual with stainless steel grating frame for tiling with customers floor finish. Outlet DN 50/DN 100 vertical.

**Specification**

- Stainless steel tile holder and frame
- Integrated screed anchoring
- Flexible, click-in sealing sleeve for secure connection to bonded and sheet waterproofing conforming to DIN 18534
- Fully removable, two-piece trap insert and rodding eye, 50 mm water seal (conforming to DIN EN 1253)
- Temporary blanking plate
- Three sound-insulated mounting feet for fixing and height adjustment 85 – 250 mm
- Spigot can be shortened for floorings 11 – 36 mm (including adhesive)

**Material**

Polypropylene drain body and outlet, highly impact-resistant; 1.4301 stainless steel tile holder; spigot in ABS, frame in 1.4301 stainless steel  
Pre-assembled set consisting of parts no. 517272 + 517234 + 517340.

Grating with positioning aid laterally adjustable +/- 3.5 mm.

Fire and sound-insulating collar - installation kit 2 (Part No. 515025) or

fire protection kit 12 (Part No. 515438) applicable.

**Flow rates tested to DIN EN 1253:**

Nominal diameter	Product standard	Min. flow rate according to norm	Water level according to norm	Flow rate at water level 10 mm	Flow rate at water level 20 mm
DN 50	DIN EN 1253	0.80 l/s	20.00 mm	1.10 l/s	1.15 l/s

**Spare parts:**

517272 grating DallDrain Individual, 100 x 100

517340 mounting feet DallDrain

517357 trap insert DallDrain

517197 sealing sleeve DallDrain