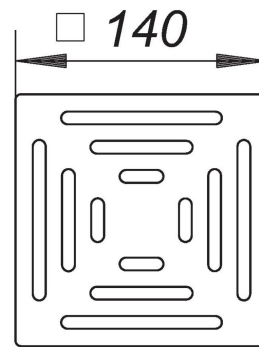
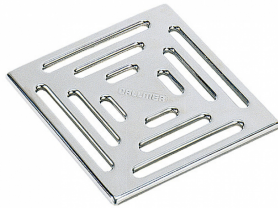


21. November 2019

DALLMER**grate E 140, 140 x 140 mm**

Product No. **501110**
 EAN: 4001636501110
 Discount group: 3



for 150 x 150 mm frame

material:
 304 stainless steel, load class K 3 (300 kg)

Colour coated grates on request.

Product No.	Description	Dimensions
571274	floor drain type 57 KE, DN 50/DN 70, 150 x 150 mm	DN 70/DN 100, 150 x 150 mm

Product No.	Description	Dimensions
500816	extension CKR 15, d: 150 x 7,5 mm	
513557	floor drain CIRCO V.3, DN 50/DN 70, 150 x 150 mm	DN 50/DN 70, 150 x 150 mm
500809	frame CK 15, 150 x 150 mm	150 x 150 mm
500670	frame K 15, 150 x 150 mm	150 x 150 mm
495242	frame KEN 10, 150 x 150 mm	150 x 150 mm
400338	Frame KEN S 10/150, 150 x 150 mm	150 x 150 mm
500571	frame PVC 15, 150 x 150 mm	150 x 150 mm
495310	frame PVC-KEN 10, 150 x 150 mm	150 x 150 mm
500625	frame S 15, 304 stainless steel, 150 x 150 mm	150 x 150 mm
503077	Frame S 15/150, 304 stainless steel, 150 x 150 mm	150 x 150 mm

21. November 2019

DALLMER

503084	Frame S 15/150, 316Ti stainless steel, 150 x 150 mm	150 x 150 mm
495259	frame SES 10, 150 x 150 mm	150 x 150 mm
503022	Frame V, S 15/150, 304 stainless steel, 150 x 150 mm	
503053	frame V, S 15/150, 316Ti stainless steel, 150 x 150 mm	150 x 150 mm
500663	frame VS 15, 150 x 150 mm	150 x 150 mm
500502	RENO-frame, 150 x 150 mm	150 x 150 mm