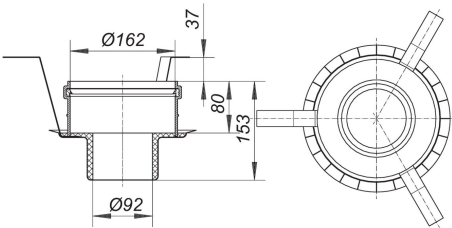


21. October 2019

fire and sound-insulating collar - installation kit 1,  
DN 50/DN 70

Product No. **515018**  
EAN: 4001636515018  
Discontinued



used with floor channel CeraLine vertical F 1300 - F 2000, floor drain bodies 61 HT, 61 HT DallBit, 61 GA, 61 GA DallBit, floor drains 61 HT/E, 61 HT/KE in DN 50 and DN 50/DN 70 sizes without inlet, type 62 roof drains DN 70 and floor drains CIRCO V. For installation in core drills (d: 200 mm) in F 30/60/90/120 rated floors.

- specification:
- insertion element
  - intumescent material
  - built-in hangers
  - mortar guard
  - sound-insulating collar
  - blanking plate

connects to:  
plastic pipework DN 50 and DN 70 with couplings

| Product No. | Description  | Dimensions  |
|-------------|--|-------------|
| 612748      | floor drain body type 61 GA DallBit, DN 70 SML     | DN 70 SML   |
| 612755      | floor drain body type 61 GA DallBit, DN 80 SML     | DN 80 SML   |
| 611727      | floor drain body type 61 GA, DN 50 SML             | DN 50 SML   |
| 611741      | floor drain body type 61 GA, DN 70 SML             | DN 70 SML   |
| 611758      | floor drain body type 61 GA, DN 80 SML             | DN 80 SML   |
| 612847      | floor drain body type 61 HT DallBit PP NIRO, DN 70 | DN 70       |
| 612021      | Floor drain body type 61 HT DallBit, DN 50         | DN 50       |
| 612052      | Floor drain body type 61 HT DallBit, DN 50/DN 70   | DN 50/DN 70 |

21. October 2019

**DALLMER**

|        |   |                           |
|--------|---|---------------------------|
| 611024 | Floor drain body type 61 HT, DN 50                              | DN 50                     |
| 611055 | Floor drain body type 61 HT, DN 50/DN 70                        | DN 50/DN 70               |
| 611840 | floor drain body type 61 HT, PP-NIRO, DN 70                     | DN 70                     |
| 513564 | floor drain CIRCO V.1, DN 50/DN 70, 120 x 120 mm                | DN 50/DN 70, 120 x 120 mm |
| 513571 | floor drain CIRCO V.2, DN 50/DN 70, 100 x 100 mm                | DN 50/DN 70, 100 x 100 mm |
| 513557 | floor drain CIRCO V.3, DN 50/DN 70, 150 x 150 mm                | DN 50/DN 70, 150 x 150 mm |
| 611154 | floor drain type 61 HT/E, DN 50/DN 70, 100 x 100 mm             | DN 50/DN 70, 100 x 100 mm |
| 611253 | floor drain type 61 HT/KE, DN 50/DN 70, 150 x 150 mm            | DN 50/DN 70, 150 x 150 mm |
| 621047 | roof drain type 62 clamp ring, DN 70                            | DN 70                     |
| 622044 | roof drain type 62 DallBit, DN 70                               | DN 70                     |
| 621641 | roof drain type 62 FPO, DN 70                                   | DN 70                     |
| 623041 | roof drain type 62 PVC, DN 70                                   | DN 70                     |
| 521682 | shower channel CeraLine vertical F Duo 1300 mm, DN 50/DN 70     | DN 50/DN 70               |
| 521699 | shower channel CeraLine vertical F Duo 1400 mm, DN 50/DN 70     | DN 50/DN 70               |
| 521705 | shower channel CeraLine vertical F Duo 1500 mm, DN 50/DN 70     | DN 50/DN 70               |
| 521712 | shower channel CeraLine vertical F Duo 1600 mm, DN 50/DN 70     | DN 50/DN 70               |
| 521729 | shower channel CeraLine vertical F Duo 1700 mm, DN 50/DN 70     | DN 50/DN 70               |
| 521736 | shower channel CeraLine vertical F Duo 1800 mm, DN 50/DN 70     | DN 50/DN 70               |
| 521743 | shower channel CeraLine vertical F Duo 1900 mm, DN 50/DN 70     | DN 50/DN 70               |
| 521750 | shower channel CeraLine vertical F Duo 2000 mm, DN 50/DN 70     | DN 50/DN 70               |
| 590268 | sleeve former No 1, d: 215 mm                                   |                           |
| 563231 | under-tile waterpr. fl. dr. 61 HT/VC, DN 50/DN 70, 150 x 150 mm | DN 50/DN 70, 150 x 150 mm |